


This MotoCAP safety rating applies to:

Brand: PMJ
Model: Rider Jeans
Type: Pants - Denim
Date purchased: 3 April 2019
Sizes tested: 36
Gender: M & F
Style: All Purpose
Test code: P19D01

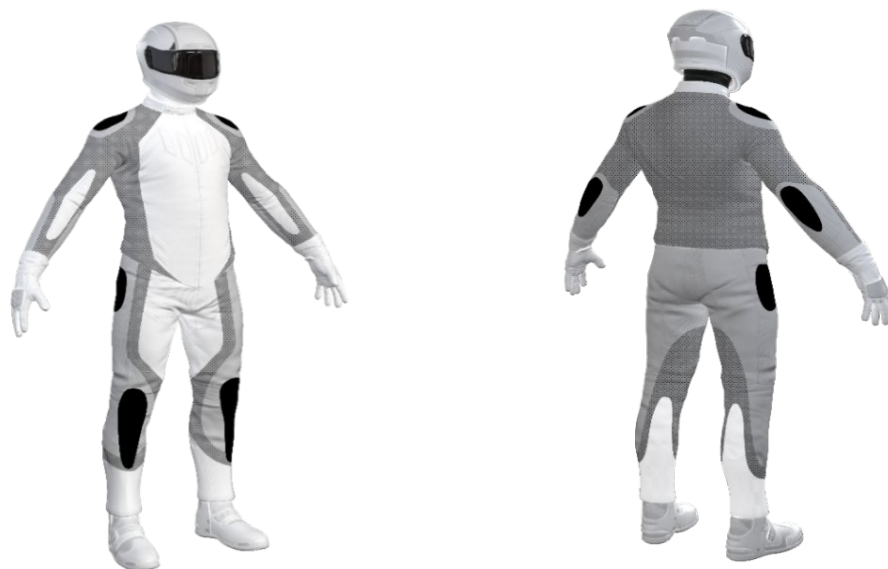
Test Results Summary:

	Rating	Score
MotoCAP Protection Rating	↘	10.2
Abrasion	1/10	0.03
Burst	10/10	1001
Impact	0/10	0.0
MotoCAP Comfort Rating	★★★	0.506
Moisture Vapour Resistance		22.4
Thermal Resistance		0.189
Water resistance	N/A	N/A

This garment is fitted with impact protectors for the knees. There are no pockets provided at the hips for aftermarket impact protectors. There are no vents to allow airflow movement through the garment.

Jacket and Pants - Crash Impact Risk Zones

This diagram is a pictorial representation of the crash impact risk Zones.


Zone 1

High risk of abrasion
High risk of impact

Zone 2

High risk of abrasion

Zone 3

Medium risk of abrasion

Zone 4

Low risk of abrasion

Abrasion Resistance

The garment was tested for abrasion resistance in accordance with MotoCAP test protocols. The table below shows the test results for time to abrade through all layers of the materials. Calculated for each sample by Zone, type and area coverage of each material as a proportion of that Zone.

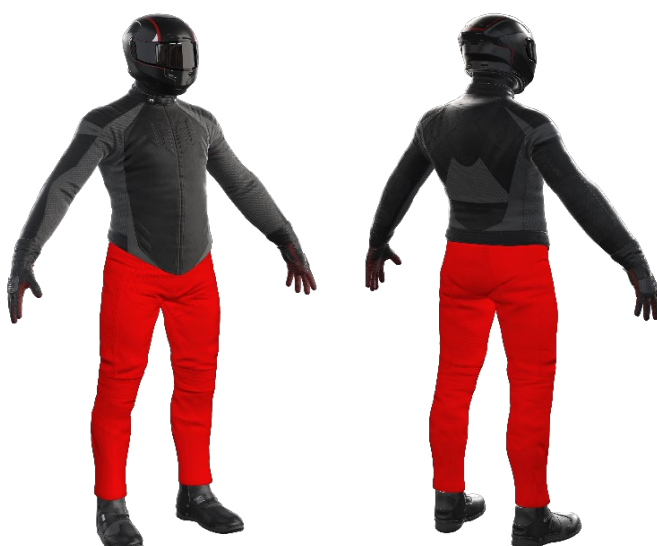
Details of materials used in garment:

Material A:	Denim shell, aramid fabric layer and mesh inner liner
Material B:	Denim shell with mesh inner liner
Material C:	Denim Shell

Zone	Coverage (%)	Abrasion time for each test (seconds)						Average (seconds)	
		1	2	3	4	5	6		
Zone 1 and 2 areas (High abrasion risk)									
Material A	50%	2.01	1.03	1.96	2.34	1.50	2.12	1.83	M
Material B	50%	0.33	0.45	0.48	0.33	0.39	0.31	0.38	P
Zone 3 area (Medium abrasion risk)									
Material B	20%	0.33	0.45	0.48	0.33	0.39	0.31	0.38	P
Material C	80%	0.43	0.30	0.37	0.45	0.35	0.29	0.37	P
Zone 4 area (Low abrasion risk)									
Material B	20%	0.33	0.45	0.48	0.33	0.39	0.31	0.38	P
Material C	80%	0.43	0.30	0.37	0.45	0.35	0.29	0.37	P

Abrasion times are capped at a maximum of 10.00s.

The diagram below is a visual indication of the likely abrasion performance of the materials in each zone calculated from the data in the table above. The colour coding is based on the worst performing material in each zone.



Determining Criteria		Good	Acceptable	Marginal	Poor
High abrasion risk	Zone 1/2:	> 5.6	3.0 - 5.6	1.3 - 2.9	< 1.3
Medium abrasion risk	Zone 3:	> 2.5	1.8 - 2.5	0.8 - 1.7	< 0.8
Low abrasion risk	Zone 4:	> 1.5	1.0 - 1.5	0.4 - 0.9	< 0.4

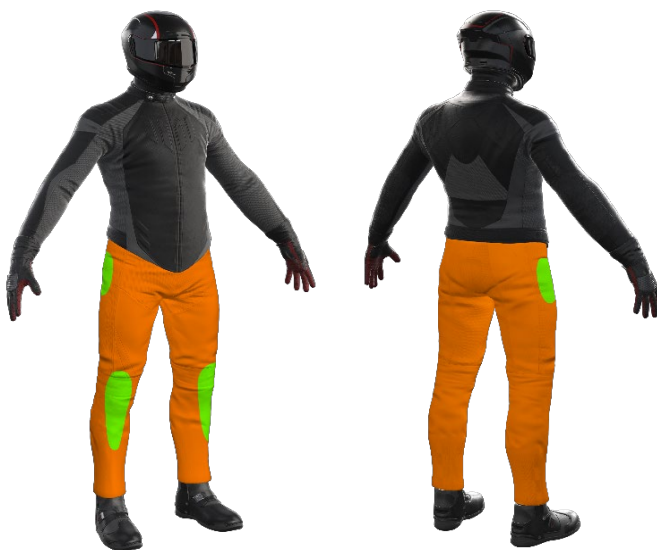
Burst Strength

The garment's burst strength was tested in accordance with MotoCAP test protocols. The table below shows the burst pressure in kilopascals (kPa) for each sample tested by Zone and the average result for each zone.

Burst pressure (kPa)

Area	1	2	3	4	5	Average	
Zones 1 & 2	1833	1747	1633	1560	766	1507	G
Zone EZ	884	760	737	843	344	713	M
Zones 3 & 4	555	370	625	631	649	566	M

The diagram below illustrates the burst strength results in terms of the likely performance of the garment in an impact and is a pictorial representation of the data from the table above.



Determining Criteria

Burst strength

	Good	Acceptable	Marginal	Poor
(kPa)	 > 1000	 800 - 1000	 500 - 799	 < 500

Impact Protection

The garment was tested for impact protection and coverage in accordance with MotoCAP test protocols. The table below shows the test results for each strike on each impact protector in kilonewtons (kN) and their area of coverage as a proportion (%) of the Zone.

Impact protector type	Knee			Hip			
Average force (kN)	25.7	<div>M</div>			<div>P</div>		
Maximum force (kN)	36.8	<div>P</div>			<div>P</div>		
Coverage of zone 1 area	130%				0%		
Coverage of zone after displacement	40%				0%		
Individual test results							
Impact force (kN)	Knee			Hip			
Strike location	A	B	C	A	No impact protector present		
					B	C	
Impact Protector 1	18.8	22.4	29.9				
Impact Protector 2	19.7	26.7	34.9				
Impact Protector 3	18.6	23.6	36.8				

The diagram below is a visual indication of the likely performance of each impact protector calculated from the data in the table above. The colour coding is based on the worst performing score for average or maximum force for each impact zone.



		Good	Acceptable	Marginal	Poor*
					
Determining Criteria	(kN)	< 15	15 - 24	25 - 30	> 30

* Poor may also indicate that no impact protector, or impact protector pocket is present in the garment

Areas shaded black are not considered in the impact protection ratings.

Thermal comfort

The garment was tested for thermal comfort following the MotoCAP test protocols. The table below shows the moisture vapour resistance and the thermal resistance values obtained.

	1	2	Average
Moisture Vapour Resistance - R_{et} (kPam ² /W)	21.1	23.7	22.4

	1	2	Average
Thermal Resistance - R_{ct} (Km ² /W)	0.184	0.195	0.189

Water spray and rain resistance

This garment has not been advertised as water resistant so has not been tested for water spray and rain resistance.